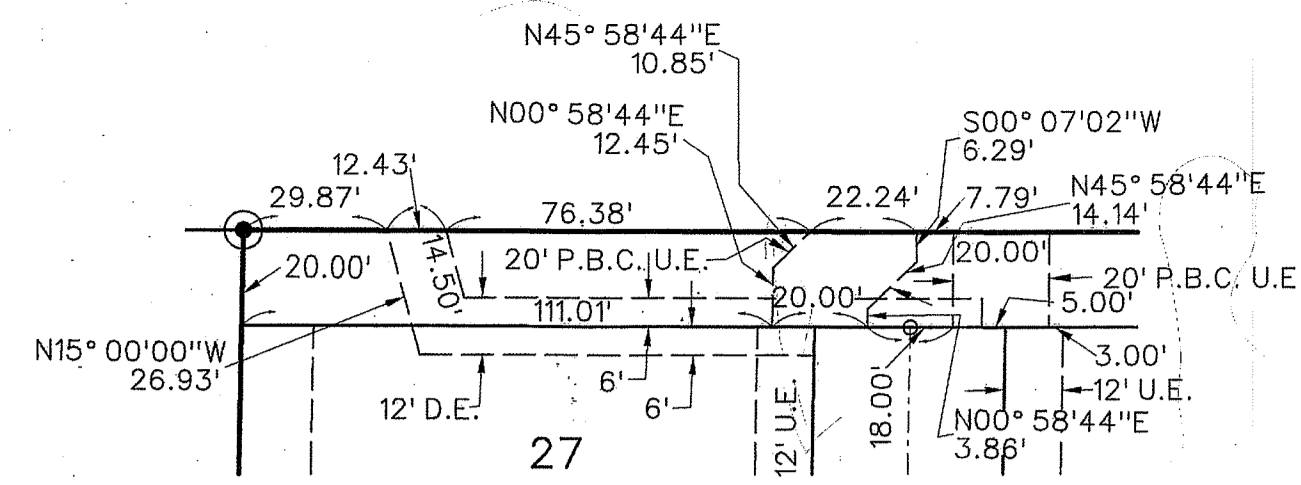


PERIMETER

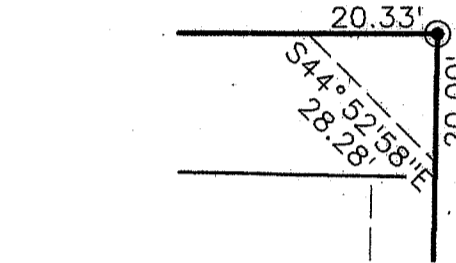
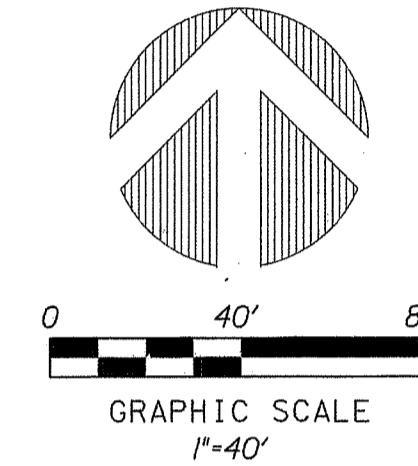
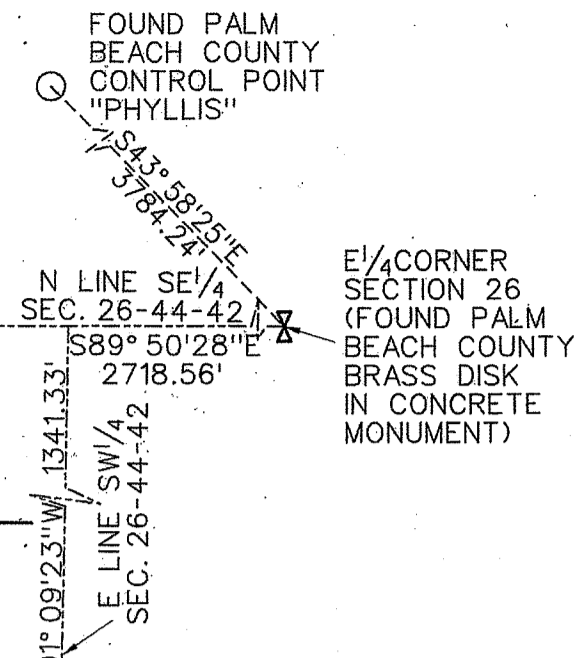
SURVEYING & MAPPING
Certificate of Authorization No. LB7264
Prepared by: Jeff S. Hodapp, P.S.M.
947 Clint Moore Road
Boca Raton, Florida 33487
Tel: (561) 241-9988
Fax: (561) 241-5182



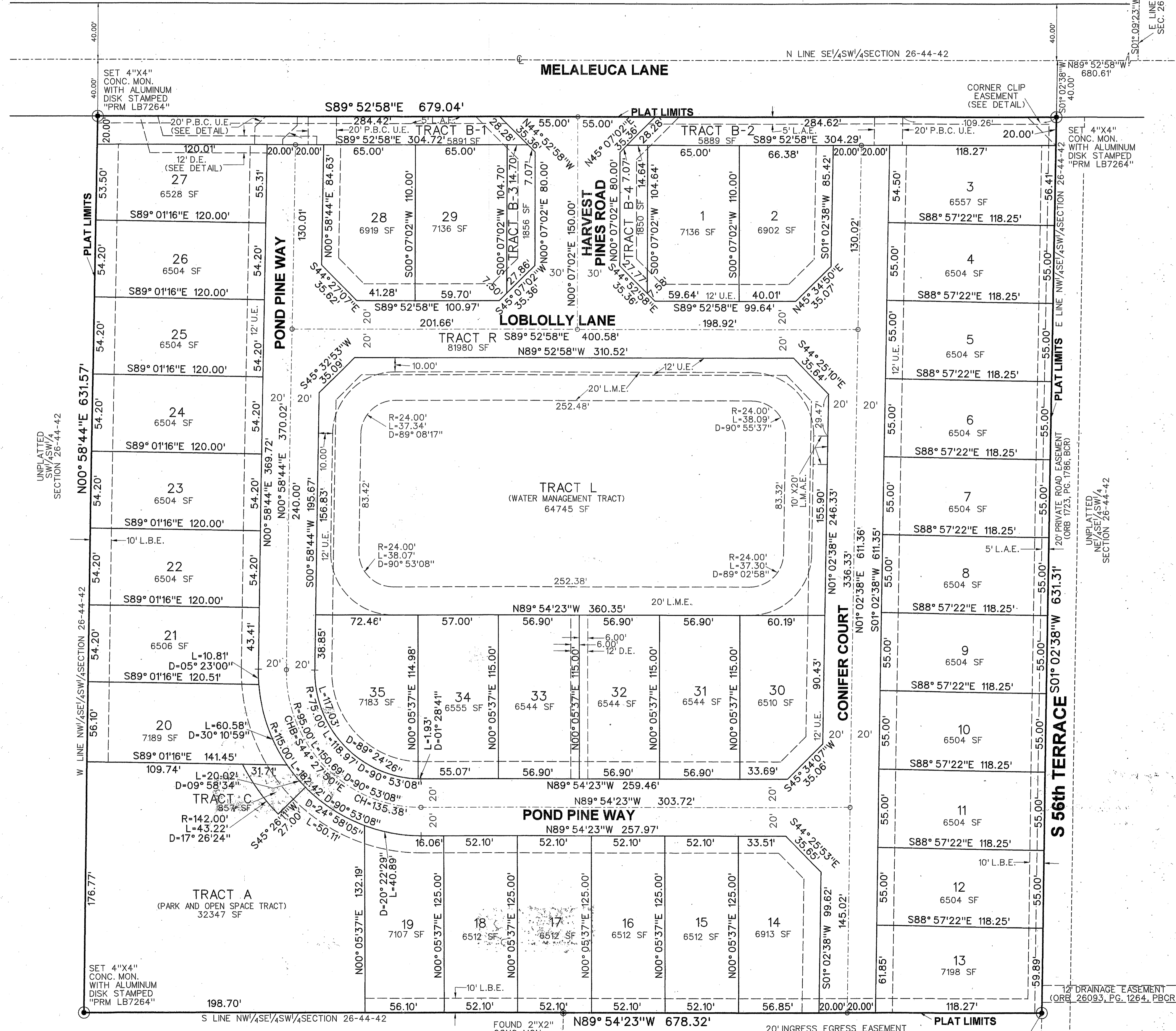
DETAIL - DRAINAGE EASEMENT AND
PALM BEACH COUNTY UTILITY EASEMENTS

HARVEST PINES

A PORTION OF THE SOUTHWEST ONE-QUARTER OF
SECTION 26, TOWNSHIP 44 SOUTH, RANGE 42 EAST,
CITY OF GREENACRES, PALM BEACH COUNTY, FLORIDA.
APRIL, 2015



DETAIL - CORNER CLIP EASEMENT



LEGEND:

- SET P.R.M. (UNLESS OTHERWISE NOTED)-4\"/>
 - CONC. MON. WITH ALUMINUM DISK STAMPED P.R.M. •LB7264
 - ⊕ P.C.P. CENTERLINE
-
- CONC. CONCRETE
 - COR. CORNER
 - D DELTA (CENTRAL ANGLE)
 - D.E. DRAINAGE EASEMENT
 - L ARCLength
 - L.B. LICENSED BUSINESS
 - L.B.E. LANDSCAPE BUFFER EASEMENT
 - L.E. LANDSCAPE EASEMENT
 - L.M.E. LAKE MAINTENANCE EASEMENT
 - L.S. LICENSED SURVEYOR
 - MON. MONUMENT
 - O.R.B. OFFICIAL RECORDS BOOK
 - N.R. NON-RADIAL
 - P.B. PLAT BOOK
 - P.B.C.R. PALM BEACH COUNTY RECORDS
 - P.B.C.U.E. PALM BEACH COUNTY UTILITY EASEMENT
 - P.G. PAGE
 - P.C.P. PERMANENT CONTROL POINT
 - P.O.B. POINT OF BEGINNING
 - P.O.C. POINT OF COMMENCEMENT
 - P.R.M. PERMANENT REFERENCE MONUMENT
 - P.S.M. PROFESSIONAL SURVEYOR & MAPPER
 - R.W. RIGHT-OF-WAY
 - S.E. SECTION
 - S.F. SQUARE FEET
 - U.E. UTILITY EASEMENT